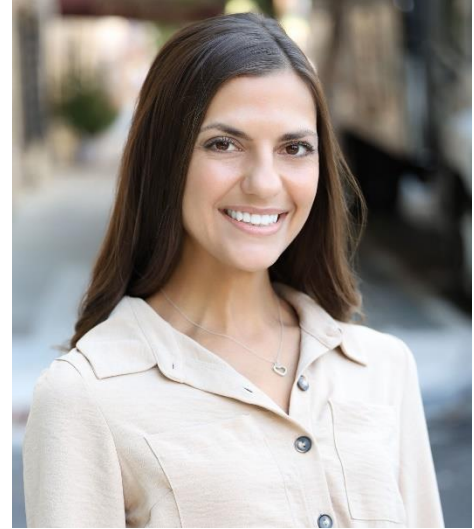


Nicole Stellaccio remembers a “Mythbuster” Engineering Clinic

Nicole (Bacher) Stellaccio grew up in Washington Township, NJ. Her mother was a nurse. Her father is a CPA. She has an older sister who teaches high school German. Her younger sister is a nurse.

Nicole graduated from Rowan Civil and Environmental Engineering in 2010. Her first job was at the Atlantic County Utilities Authority. ACUA is the provider of solid waste and wastewater services in Atlantic County, NJ. She worked on a five-person team: four engineers and an inspector. She got a lot of project management experience at ACUA and enjoyed getting to work on projects from start (problem identification) to finish. She worked at ACUA for 12 years, becoming a licensed Professional Engineer¹ along the way.



Nicole started at Greeley and Hansen in Philadelphia in 2022. Her job title is Civil Engineer / Project Manager. She currently is working with PA American Water, a private company that provides drinking water and treats wastewater and owns and maintains an 11,000-mile network of water and sewer mains. Nicole is responsible for helping PA American Water comply with EPA Lead and Copper Rule regulations. The current focus is on inventorying the network to identify lead service lines. Inspectors go door to door, make a determination, and take photos if needed. According to the CDC, there is no safe blood level of lead for young children. For this reason, The US government is providing funds for replacing lead service lines.

Nicole is busy outside of work raising two young children with her husband, Michael.

I chose to go to Rowan because it was close to home, allowing me to commute all 4 years and stay close with my family. I knew I wanted a career in STEM, so the combination of the reputation of Rowan’s Engineering Department, the scholarship money I was offered, and the ability to be with family made my decision easy. My cousin, Kristen, went through the Rowan CEE program and spoke highly of it, which was also influential in my decision. At the time, I was mostly interested in structures, buildings and bridges.

Looking back, Professor Mehta’s classes were the hardest, but in all the right ways. The Engineering Clinic projects and classes were always my favorite. I enjoyed that these projects really encouraged hands-on learning and working in interdisciplinary teams. My very first clinic project was to design and solve our own “Mythbusters” experiments. Our teams were able to take charge and follow our ideas through in really imaginative ways. It was such a great introduction to how we would spend the next 4 years.

One of my favorite parts of the CEE program was that it felt like a community. Our cohort was small enough that we had all our classes together, which really helped us to connect with each other and our professors. I always felt comfortable popping into a professor’s office to ask a question and they were always more than willing to help in any way they could. During my time at Rowan, I enjoyed being a part of the student clubs and societies. My senior year in the

program, I took on the role of ASCE president and was on the e-board for the Tau Beta Pi honors society.

I enjoyed my time at Rowan and my time in the CEE community. My classmates became my friends. On the job, I've worked with Rowan Alumni at every company I've worked for in South Jersey and Philadelphia.

Based on an Interview with Jess W. Everett on 2024-2-14

1. The Professional Engineer license (PE) is a "standard recognized by employers and their clients, by governments and by the public as an assurance of dedication, skill and quality...Only PEs can sign and seal engineering drawings...To become a Licensed Professional Engineer, you must do four things: graduate from an accredited engineering program, pass the Fundamentals of Engineering (FE) exam, work with a professional engineer for four years, and pass the Principles and Practice of Engineering exam."

2. The American Society of Civil Engineers is a professional body, founded in 1852, that represents members of the civil engineering profession worldwide. There are more than 500 chapters for professionals and students and over 150,000 members in 177 countries.

3. Engineering Clinic is a hallmark of Rowan University. Students take a Clinic class each semester, eight total. Many are interdisciplinary. All are hands-on. First-year Clinics focus on engineering's place in society and fundamental engineering skills. Sophomore Clinics merge communication coursework with an engineering design experience and are team taught by engineering, writing arts, and rhetoric faculty. Junior and Senior Clinics have students work in teams on research or design projects, usually externally funded.